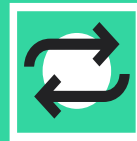




shiftskill



Solutions so obvious,
you'll think you found
them yourself





Shiftskill was born from several realizations.

Companies today want to simplify their process with IT's and computing's help by adopting a multitude of software and digital tools. Nevertheless, they can't seem to always achieve proper and relevant data visualisation, getting lost amidst this profusion of tools.

Moreover, many of these companies say they want «*to use AI*» but don't actually know how or what to do.

This sector is in a huge growth period and it can be a hard task these days to find the proper, skillful people to set up such an endeavor. It is nevertheless quite clear to us that many of our current clients have seen themselves become lost in the past or have spent vast sums of money for a result unbecoming of their expectations.

Shiftskill brings an answer to both of these issues by offering a software that is simultaneously easy to use and fulfill these companies' expectations in their quest of simplicity and practicality.

Let us explain.





DATA EXPLOITATION



25%

Used Data

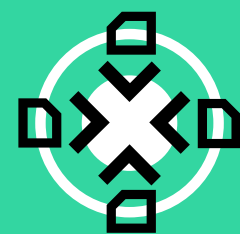
50% of all companies which exploits their data actually use only 25% of it.



75%

Unused Data

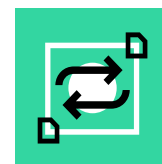
That means up to 75% of said data are left unused, even though they can have a real usefulness by processing them in a meaningful and relevant way and assigning them to the right process. You can for example pair the data with an AI in order to generate predictions, increase optimisation or even proactive maintenance.



What is SHIFTSKILL ?



THE BENEFITS for you



1.

Simplify the interconnection between all your softwares.



2.

Keep all your data close in a single, centralized space and visualize it easily in spreadsheets.



3.

Make data and sales prediction possible.

Shiftskill enables you to synchronize your company's data through a no-code EDI tool that is easy to use since it necessitates no developers to code the software.

Process this data at blinding speeds thanks to the Artificial Intelligence which subsequently re-integrates them into your company's systems as automatically generated dashboards.

Shiftskill is designed as much for small or middle-sized companies as it is for big industries, logistic platforms, retail websites or even sector executives, in any given field.

Quit losing time on research and data processing. Entrust this burden on AIs and focus on your sales, your marketing and all your other high-value tasks.

Place your trust in a France-based innovative expertise.



▶ Almost before we knew it, we had left the ground.

We soared into the sky like there was no tomorrow.



Our areas of expertise

Transportation & Logistic



Marketing & Sales



Banking & Finance



Medicine & Pharmaceuticals

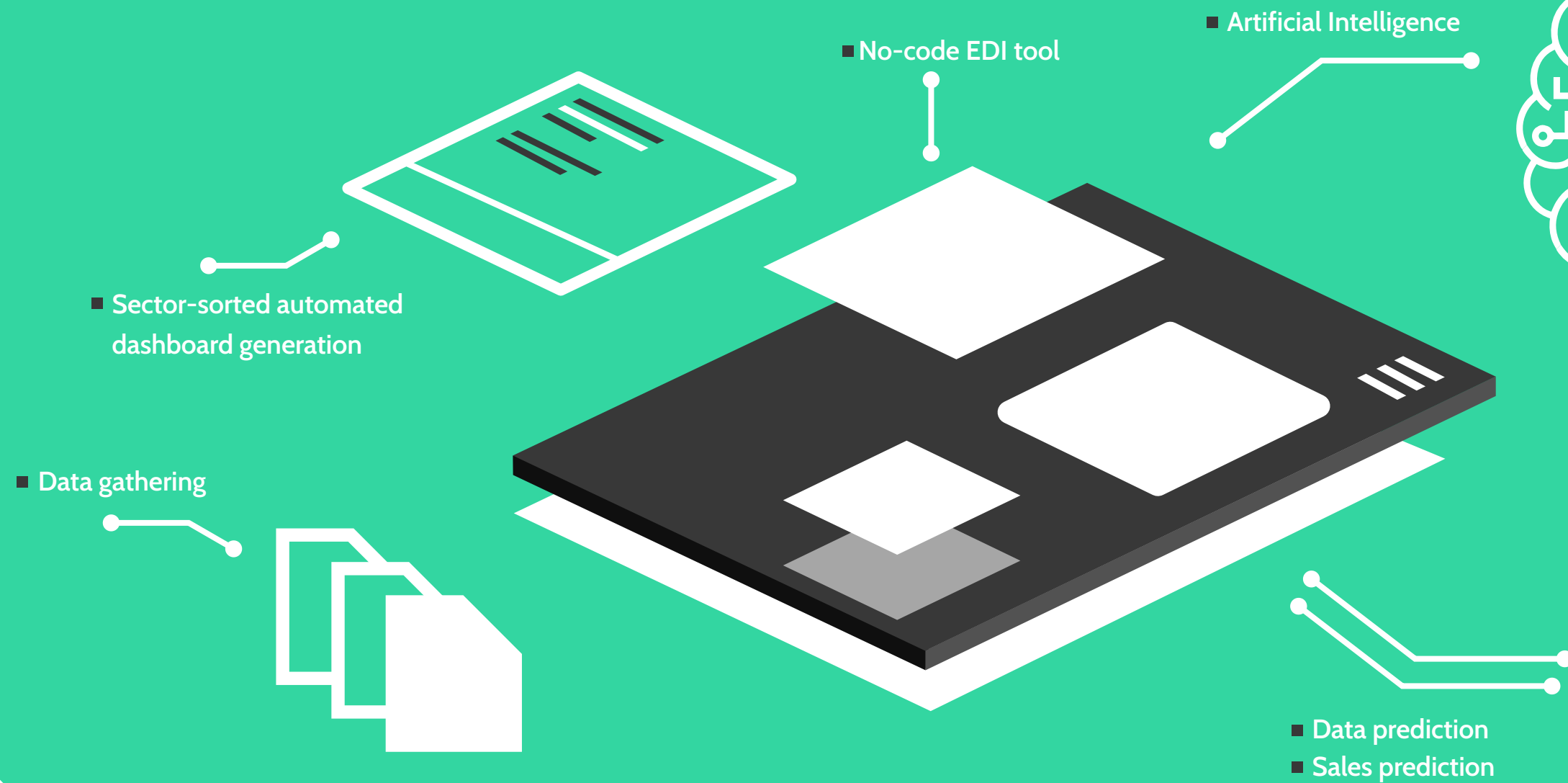


OUR MISSION

Our goal is to accompany you into your learning of Shiftskill, in order to allow you to exploit and harness the entire array of functionalities it offers in the most comprehensive and intuitive way you can imagine.

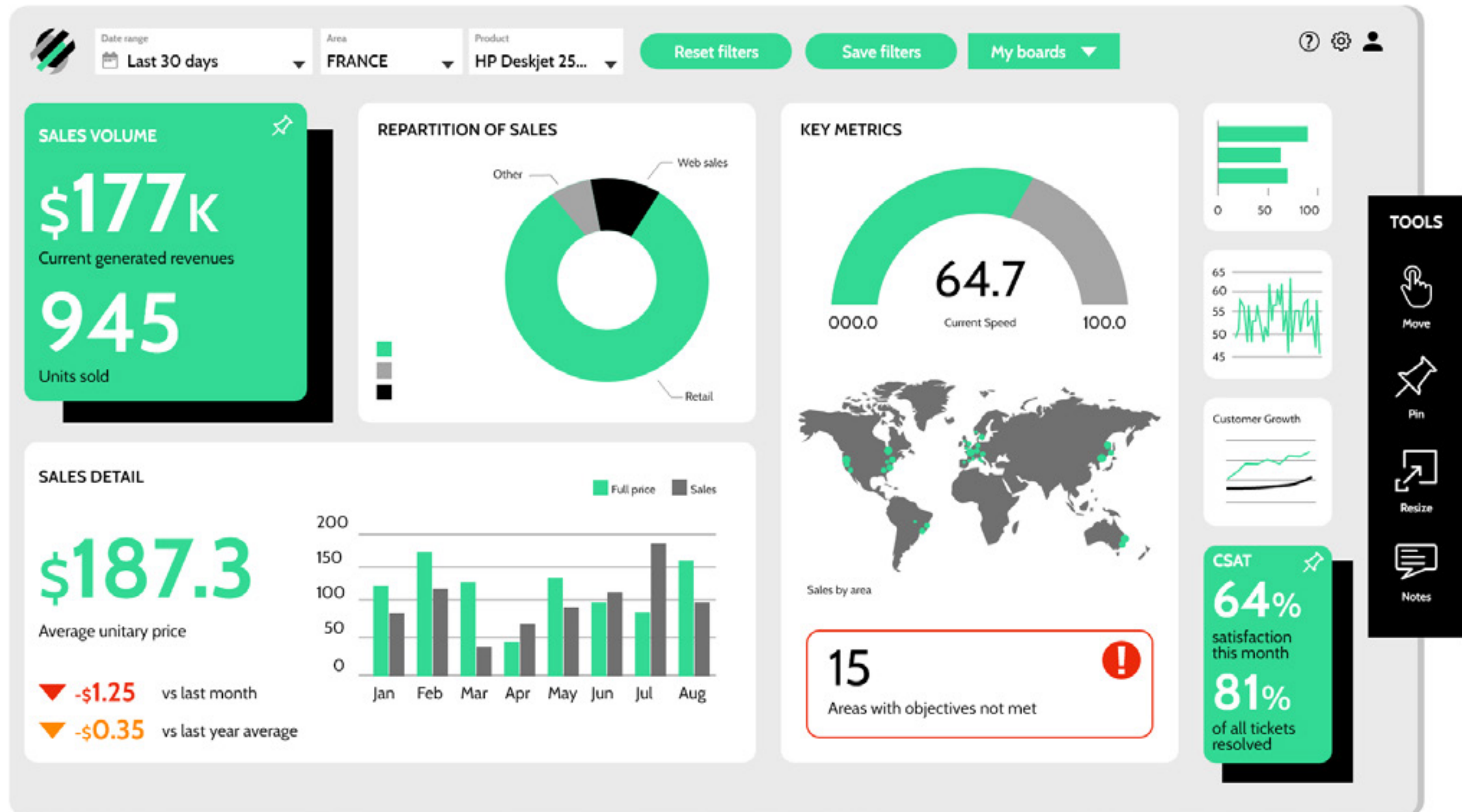
Only together do we reach our full potential.

MAIN FUNCTIONALITIES



Dashboard generation

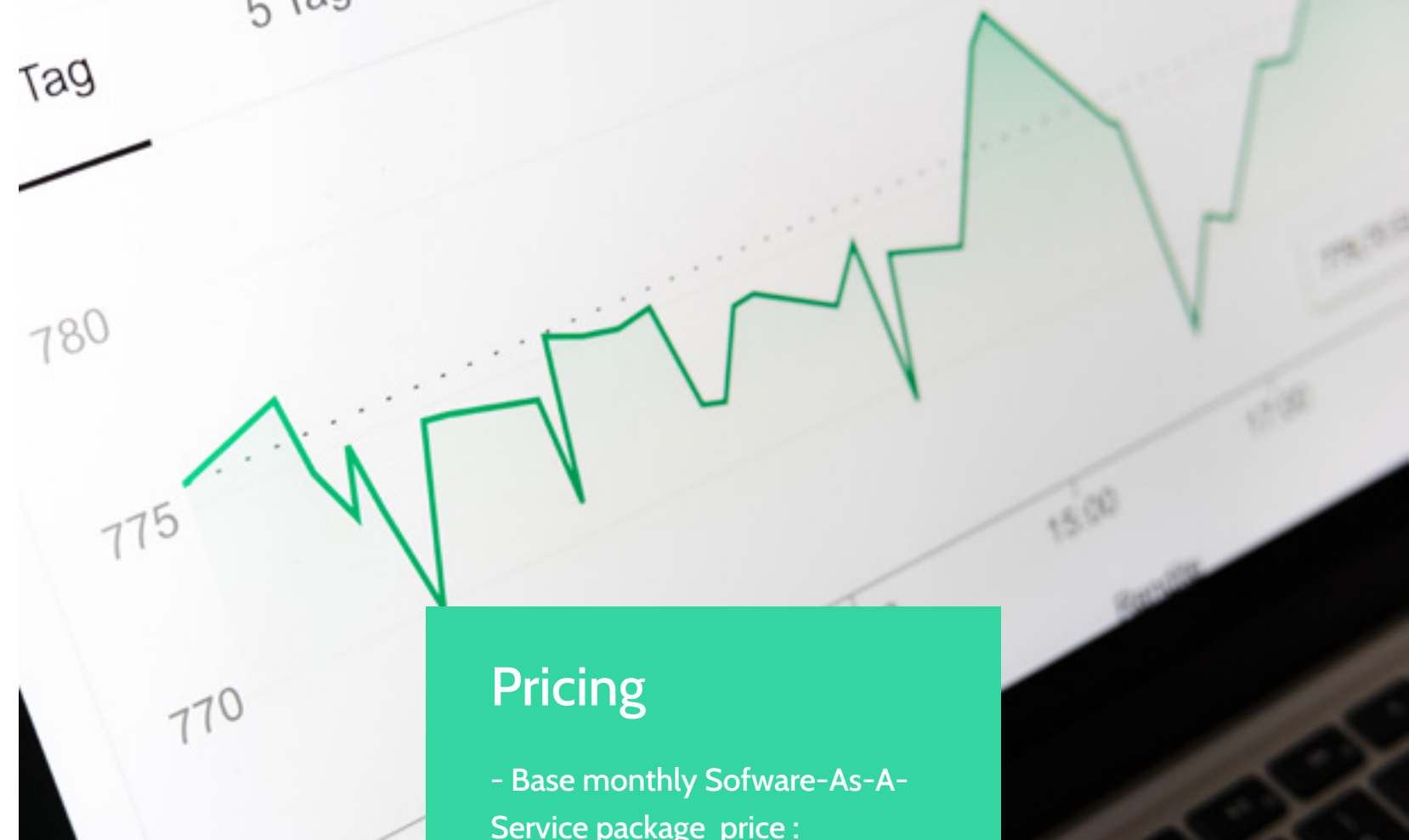
Our dashboards permit an immediate, clear and customizable visualization of the data and stats that matter to YOU. In addition to giving you access to these informations, Shiftskill offers the possibility to rearrange and sort them through many different criterias in order to get a global view of your activity in realtime.



BRING FINANCIAL VALUE TO YOUR DATA

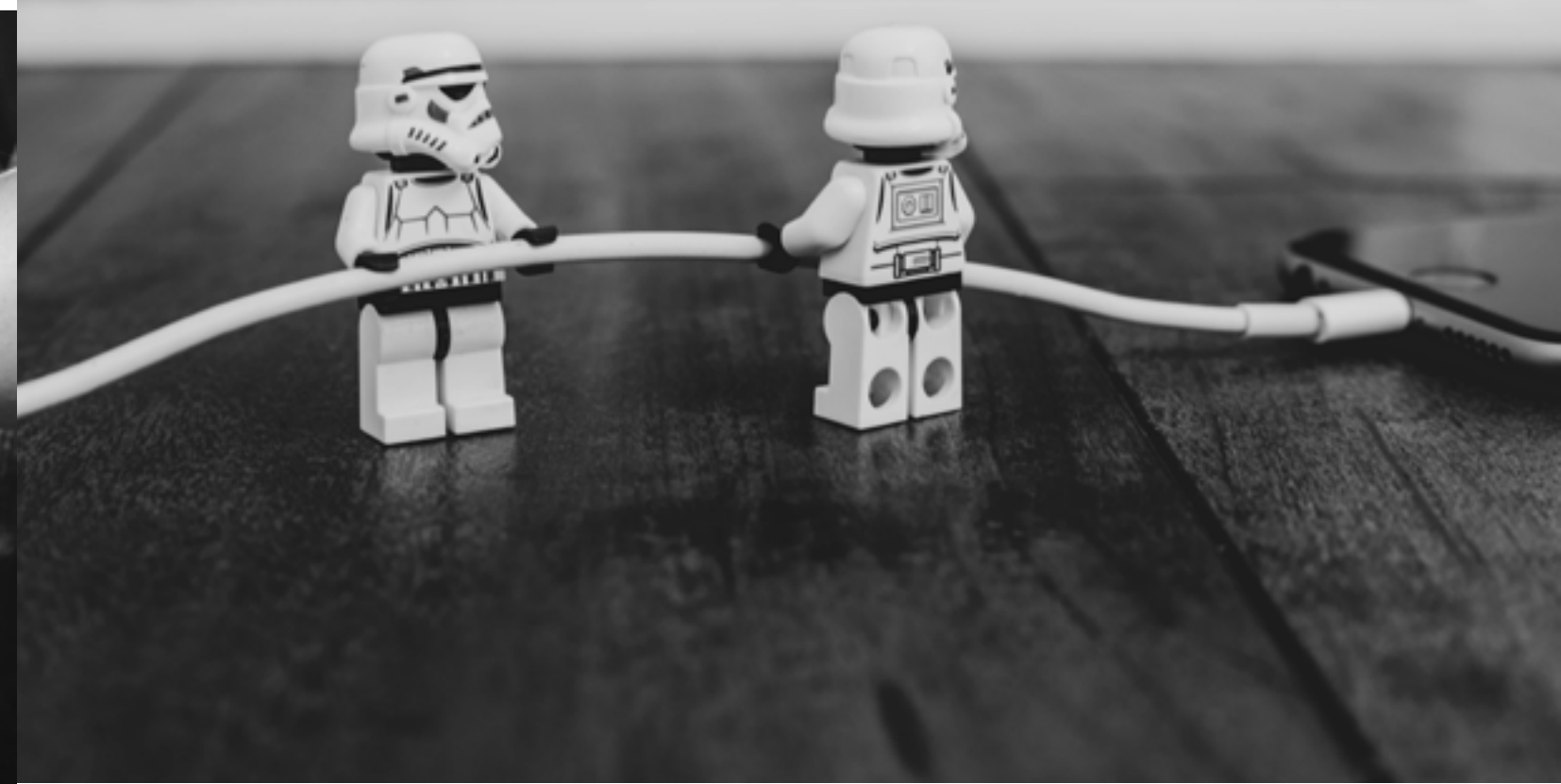
- A tool that is easy to both understand and use.
- Artificial Intelligence in all of your employees' reach.
- Increase your efficiency by 40% thanks to decision-making improvements.
- Gain 20% of your time thanks to the automation of laborious tasks.
- Improve by 30% your anticipation possibilities anticipation through a clearer vision of the past, present and future of your company.
- Custom tools for each of your company's sectors and teams

Shiftskill seeks and tracks all the lost data of your company in your stead, highlights and enhances them and facilitates their visualization.



Pricing

- Base monthly Software-As-A-Service package price : from 220€/ month
- Base rate + possibility to add AIs if needed, priced on demand.



THEY PUT THEIR
TRUST IN US



AIRBUS



Bonduelle

Kroger

THALES



► «Tomorrow and tomorrow and tomorrow.»
Macbeth, William Shakespeare





shiftskill

By ITDM Group

Contact us to access a demo
of our software

[Send us an e-mail](#)

[OUR WEBSITE](#)